



## SPARE PART LIST

### MU-FM Front 100-160

VERSION	1.1
EDITION	06.2017
REFERENCE NUMBER	MU-FM-F_ET_1-1_2017-06_EN





# Spare part list

with technical data and accessories

## Flail Mower

### MU-FM 100 – 160

Front mounted

For tractors up to maximal  
30 KW (40 PS) by 2.200 U/min

Please read carefully before operating  
Retain for future use

Müthing GmbH & Co KG Soest  
Am Silberg 23 • D - 59494 Soest  
Tel. +49 (0) 29 21 / 96 510 • Fax +49 (0) 29 21 / 73 080

[www.muething.com](http://www.muething.com) / [www.shop.muething.com](http://www.shop.muething.com)  
Service – Hotline +49 (0) 29 21 / 96 51 - 0

Date 01/ 2006 – Version 1.1  
(MU-FM-F\_ET\_1-1\_2006-01\_EN)  
Copyright © 2005 by Müthing GmbH & Co KG Soest





**Table of contents**

	<b>Page</b>
<b>1. Introduction .....</b>	<b>6</b>
<b>2. Submitting equipment data.....</b>	<b>7</b>
<b>3. Description of equipment.....</b>	<b>8</b>
<b>4. Technical data .....</b>	<b>9</b>
<b>5. Basic equipment and options .....</b>	<b>10</b>
<b>6. Spare part list .....</b>	<b>11</b>
<b>01 / 02 = Housing.....</b>	<b>12 – 13</b>
<b>02 / 02 = Rubber Wheels .....</b>	<b>14 – 15</b>
<b>03 / 02 = Rotor .....</b>	<b>16 – 17</b>
<b>04 / 02 = Supporting Roll .....</b>	<b>18 – 19</b>
<b>05 / 02 = Power Transmission.....</b>	<b>20 – 21</b>
<b>06 / 02 = Gearbox Front Left Hand.....</b>	<b>22 – 23</b>
<b>07 / 02 = Gearbox Front Right Hand .....</b>	<b>24 – 25</b>

## 1. Introduction spare part list

Dear Customer

On the following pages a complete list of all components integrated on the Müthing Flail-Mower MU-FM-31 can be found.

The parts have been separated into relevant Assemblies, are illustrated in Diagram Form and have been designated with position numbers.

Next to the position number is the component Number and Description. The number of component required for each Flail-Mower can also be found.

We ask you to use this replacement Parts list for Ordering all required components. If you have any questions, please do not hesitate to contact your supplier, they will be more than happy to help.

**Please Note! When ordering Replacement Parts always give the Replacement Part Number, the Position Number and the Diagram Number!**

**To ensure the quickest and exactest Service, it is important to include the exact description of your Flail Mower with your order.**

**Model/Type,  
Serial Number,  
Year of Manufacture.**

**If in doubt contact your supplier with the relevant information!**

**Attention! Only use original Müthing – Replacement Parts. The fitting of none original parts can invalidate your warranty!**

**Please Note! For safety reasons it is important to replace all nuts and bolt when fitting a new set of cutting flails!  
Drive Belts must be exchanged in sets!**

If you have any further question about the machines or their usage please contact your supplier. In extreme circumstances please contact us!

**Müthing GmbH & Co KG Soest**

**Tel: 02921 – 9651 0**

**Fax: 02921 – 73080**

**e-mail: [soest@muething.com](mailto:soest@muething.com)**

**Further information about Replacement and wearing Parts  
for Flail Mowers and General Farm Equipment can be found  
in the Internet on our Website**

**[www.shop.muething.com](http://www.shop.muething.com)**

## 2. Submitting equipment data

Please copy the data from your Müthing Flail Mower and the gearbox, which you will find on the type identification plates. The gearbox identification plate is mounted directly on the gearbox and the machine identification plate is mounted outside of the housing specimen:



Modell / Type ..... : **MU-FM**.....

Serial number ..... : .....

(You can find the serial number additionally under the beltcover!)

Year of manufacture : .....

Gearbox identification: .....

Following information may be useful later::

Machine purchased from : .....

First used on ..... : .....

Oil and lubricants used: (For recommendation see maintenance schedule) .....

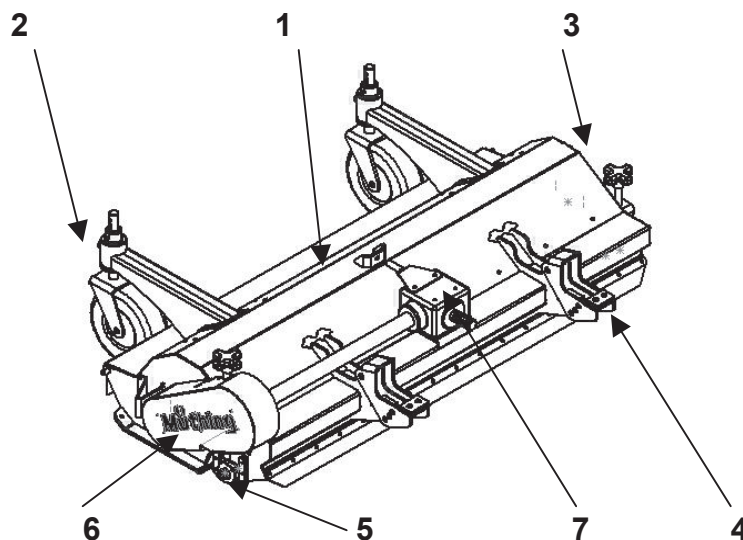
Colour shades used:      yellow = RAL 1007                      black = RAL 8349

**Accessories** ( please tick )

- |  |  |
|--|--|
| <input type="checkbox"/> Rotor with Shackle-Flails   | <input type="checkbox"/> Linkage parts for John-Deere F- 1435,1445 und 1565                |
| <input type="checkbox"/> Second shredding bar  | <input type="checkbox"/> Linkage parts for John-Deere F- 1145                              |
| <input type="checkbox"/> Height adjustable rubber wheels, 360°swivel in front of the mower | <input type="checkbox"/> Linkage parts for Iseki-SF 300, 303, 330, 333 und Massey Ferguson |
|  | <input type="checkbox"/> Linkage parts for Shibaura-CM 284, 364 und New Holland            |

### 3. Description of equipment

Your **Müthing – Flail Mower MU-FM** has different components, as you can see on the following illustration. These components are illustrated in the following spare part list where every part is listed detailed.



#### Flail Mower MU-FM with components

The important components are:

1. Housing with Guard Flaps, Rubber Guard and wearing Skids
2. Rubber wheels
3. Rotor with Bearings, Flails and Flail Brackets
4. Lower Linkage Adapter
5. Supporting Roll with Bearings
6. Power Transmisson with Belt Cover
7. Gearbox Front left Hand and right Hand
8. PTO shaft ( without Diagramm – further Information you get out of the list of our supplier)

**It is our intention to continue improving and developing Müthing products.** This means that we must reserve the right to make any improvements and changes that we feel necessary without notice. We are not however obliged to transfer these improvements and changes to machines already sold.



## 4. Technical data

Technical description	MU-FM 100-31	MU-FM 120-31	MU-FM 140-31	MU-FM 160-31
Working Width cm	100	120	140	160
Overall Width cm	125	145	165	185
Max HP Tractor KW ( PS )	30 KW ( 40 PS ) by 2.200 U/min			
Number of Knives	16	20	24	28
Number of Flails	2 x 17 x 1016 Li. until Bj. 2004 2 x 17 x 1060 Li. from Bj. 2005			
Weight	180 Kg	200 Kg	220 Kg	240 Kg
Lower Linkage Adapter	Fixed / Front			
PTO rpm	2.200 U/min.			
Gear-Box	With integrated over-run- clutch			

## 5. Options

### **Basic equipment** of the Flail-Mower Type MU-FM

- Linkage parts for Out-Front Mowers
- Gearbox with integrated over-run-clutch for 2.200U/min.
- Rotor with harden M-flails
- Shredding bar
- Wearing skids
- P.T.O. Shaft

### **Special Equipment** for MU-FM possible to deliver:

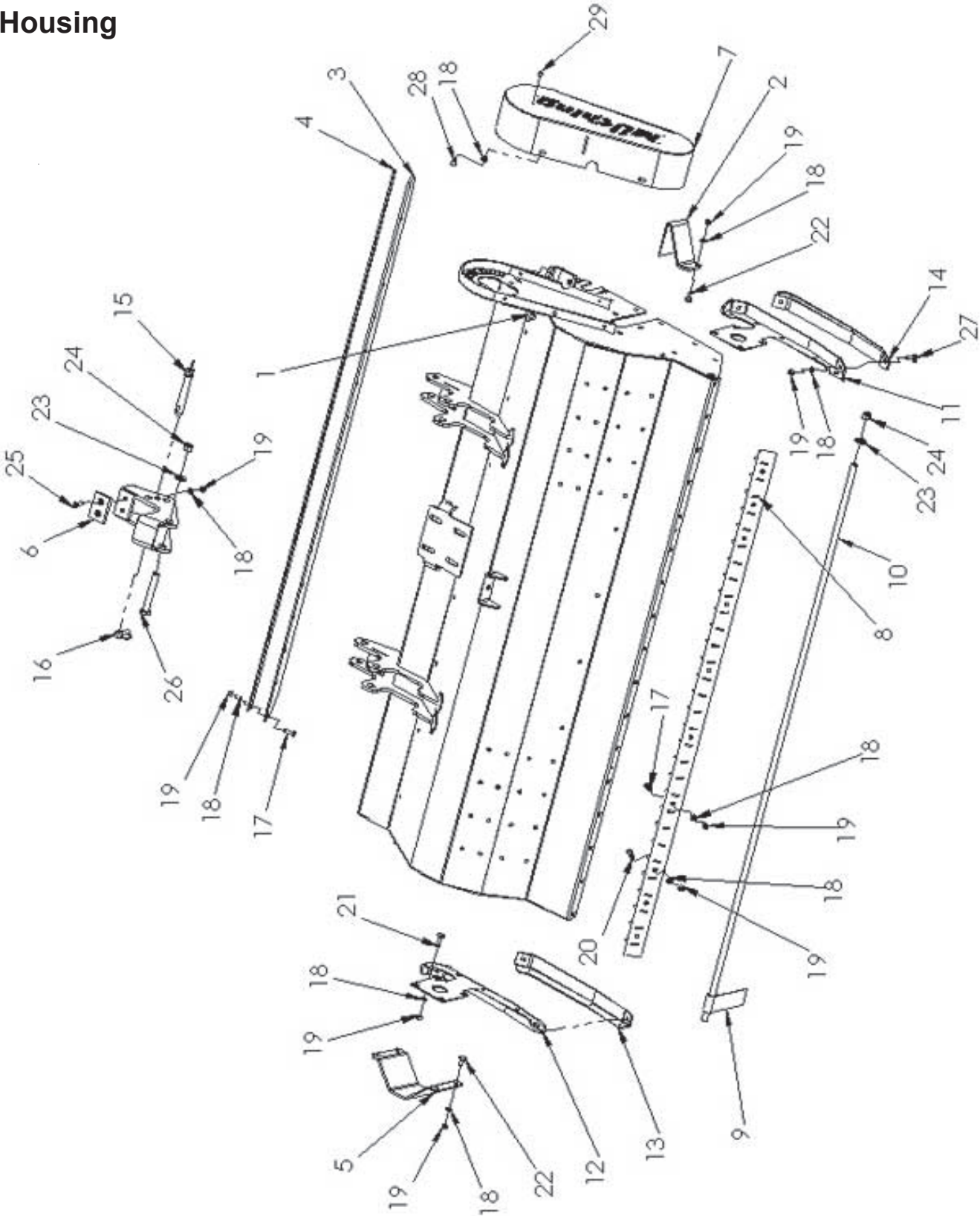
- MUFMZ031-31      Height adjustable rubber Wheels, 360° swivel
- MUFMZ046-31      Second shredding bar
- MUCZ056-31      Rotor with M-hardened shakle-flails

Date: 01. 2006

## 6. Spare Partslist

01 / 02	Housing.....	12 - 13
02 / 02	Rubber wheels.....	14 - 15
03 / 02	Rotor.....	16 - 17
04 / 02	Supporting roll .....	18 - 19
05 / 02	Power Transmission .....	20 - 21
06 / 02	Gearbox Front Left Hand.....	22 - 23
07 / 02	Gear box Front Right Hand .....	24 - 25

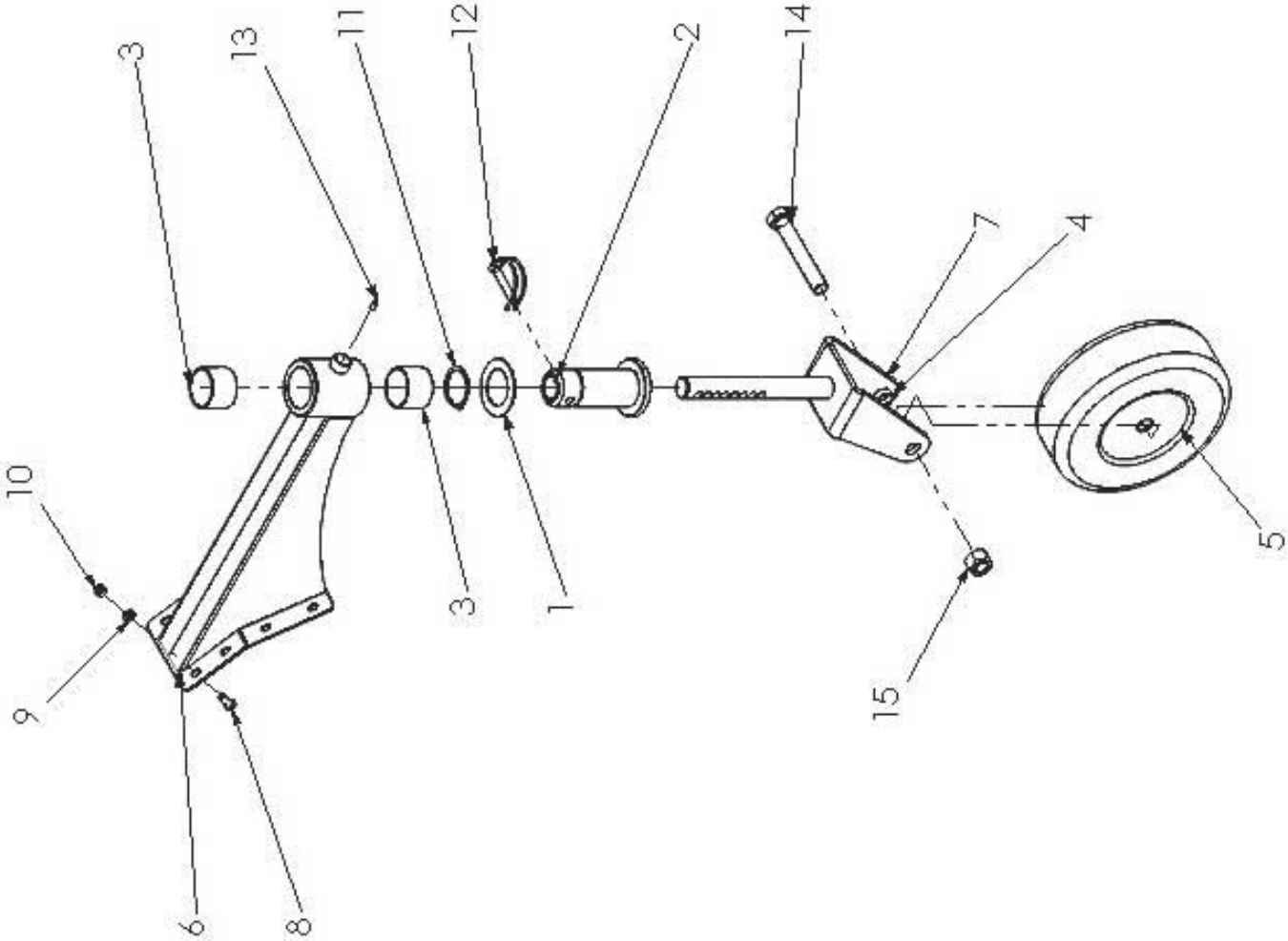
**Diagram 01/02**  
**MU-FM 100 - 160**  
**Housing**



## Diagram 01/02 Housing MU-FM

POS.	Teil. Nr.	Benennung	MU-FM 100	MU-FM 120	MU-FM 140	MU-FM 160
1	MU12040041	Housing - 100	1			
1	MU12040031	Housing - 120		1		
1	MU12040021	Housing - 140			1	
1	MU12040011	Housing - 160				1
1	MU12040051	Housing - 180				
2	MU0216011	Deflector	1	1	1	1
3	MU0208014	Rubber Guard - 100	1			
3	MU0208013	Rubber Guard - 120		1		
3	MU0208012	Rubber Guard - 140			1	
3	MU0208011	Rubber Guard - 160				1
3	MU0208015	Rubber Guard - 180				
4	MU0208024	Holding Strip - 100	1			
4	MU0208023	Holding Strip - 120		1		
4	MU0208022	Holding Strip - 140			1	
4	MU0208021	Holding Strip - 160				1
4	MU0208025	Holding Strip - 180				
5	MU0217011	Bearing Guard	1	1	1	1
6	MU0205001	Lower Linkage Adapter	2	2	2	2
7	MU0206000	Belt Cover	1	1	1	1
8	MU1213004	Shredding bar - 100	1			
8	MU1213003	Shredding bar - 120		1		
8	MU1213002	Shredding bar - 140			1	
8	MU1213001	Shredding bar - 160				1
8	MU1213005	Shredding bar - 180				
9	MU0218011	Guard Flap	20	24	27	30
10	MU0221014	Tilting Shaft - 100	1			
10	MU0221013	Tilting Shaft - 120		1		
10	MU0221012	Tilting Shaft - 140			1	
10	MU0221011	Tilting Shaft - 160				1
10	MU0221015	Tilting Shaft - 180				
11	MU0227110	Skid Left Side	1	1	1	1
12	MU0227120	Skid Right Side	1	1	1	1
13	MU0227140	Wearing Skid Right Side	1	1	1	1
14	MU0227130	Wearing Skid Left Side	1	1	1	1
15	MU0205041	Lower Link Pin	2	2	2	2
16	MU0099948	Retractable Pin 10 mm	2	2	2	2
17	MU0099966	Hexagon Head Screw	14	17	20	23
18	MU0099999	Flat Washer DIN 125	46	49	52	55
19	MU0099961	Hexagon Nut M8	42	45	48	51
20	MU0099908	Hexagon Head Screw	4	4	4	4
21	MU0099987	Coach Bolt DIN 603	10	10	10	10
22	MU0099989	Coach Bolt DIN 603	6	6	6	6
23	MU0099996	Flat Washer	4	4	4	4
24	MU0099958	Hexagon Nut M16	4	4	4	4
25	MU0099952	Counter Sunk Screw	4	4	4	4
26	MU0099978	Hexagon Head Screw	2	2	2	2
27	MU0099988	Coach Bolt DIN 603	4	4	4	4
28	MU0099972	Hexagon Head Screw	4	4	4	4
29	MU0099915	Blind Rivet DIN 7337	6	6	6	6

**Diagram 02/02**  
**MU-FM 100 - 160**  
**Carrying Wheel**

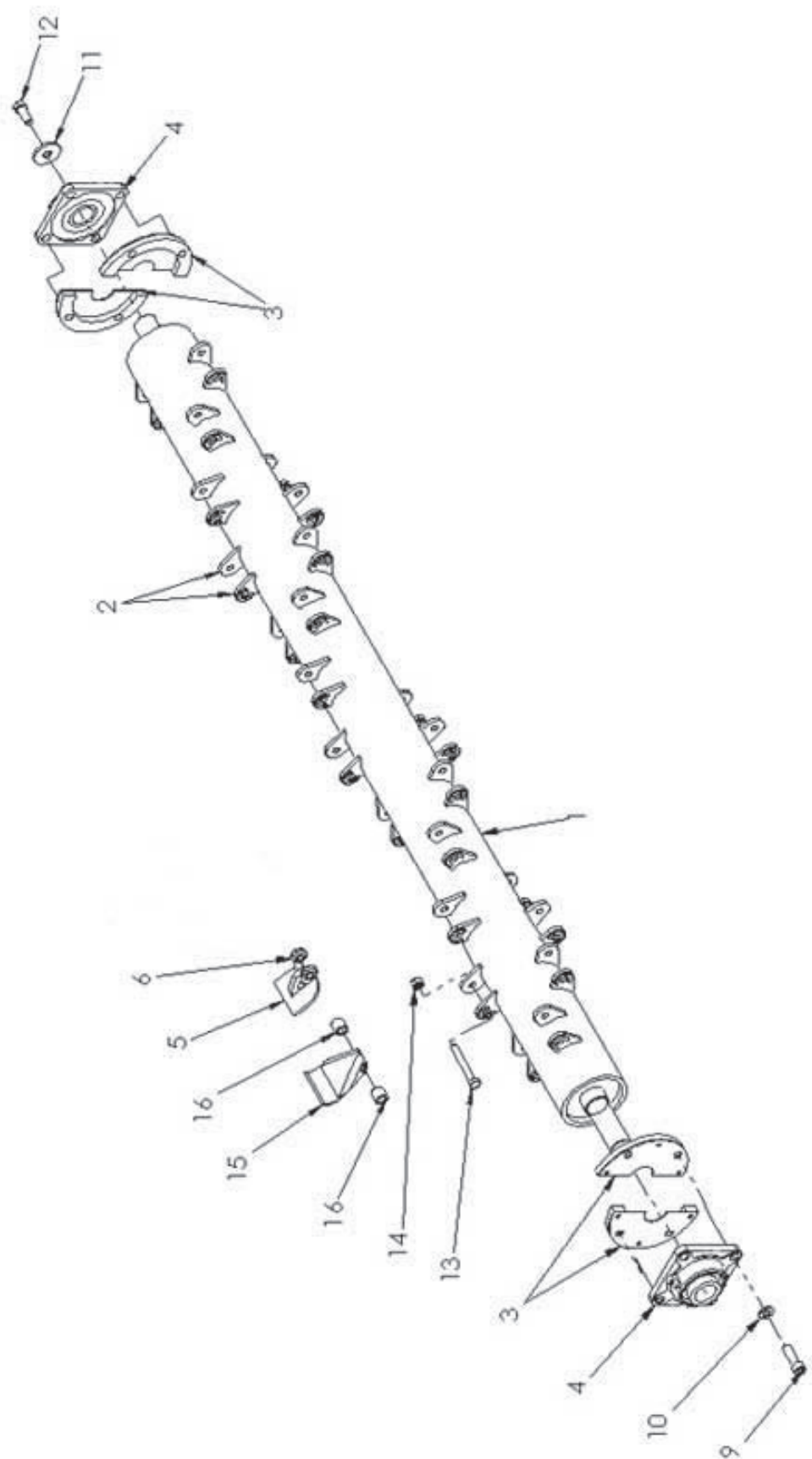


## Diagram 02/02 Rubber Wheel MU-FM, 360° Swivel

POS.	Teil. Nr.	Benennung	MU-FM	MU-FM	MU-FM	MU-FM
			100	120	140	160
1	MU0211101	Washer Disc	2	2	2	2
2	MU0211071	Loose Flange	2	2	2	2
3	MU0211111	Sliding Bush	4	4	4	4
4	MU0211051	Spacer Sleeve	4	4	4	4
5	MU0211091	Wheel	2	2	2	2
6	MU1211000	Wheel Carrier	2	2	2	2
7	MU0110751	Wheel Fork	2	2	2	2
8	MU0099966	Hexagon Head Screw	12	12	12	12
9	MU0099999	Flat Washer	12	12	12	12
10	MU0099961	Hexagon Nut M8	12	12	12	12
11	MU0099990	Retaining Ring	2	2	2	2
12	MU0099946	Retractable PIN 10 mm	2	2	2	2
13	MU0099941	Grease Nipple	2	2	2	2
14	MU0099977	Wheel Axle	2	2	2	2
15	MU0099959	Hexagon Nut	2	2	2	2

## Diagram 03/02

### MU-FM 100 - 160 Rotor

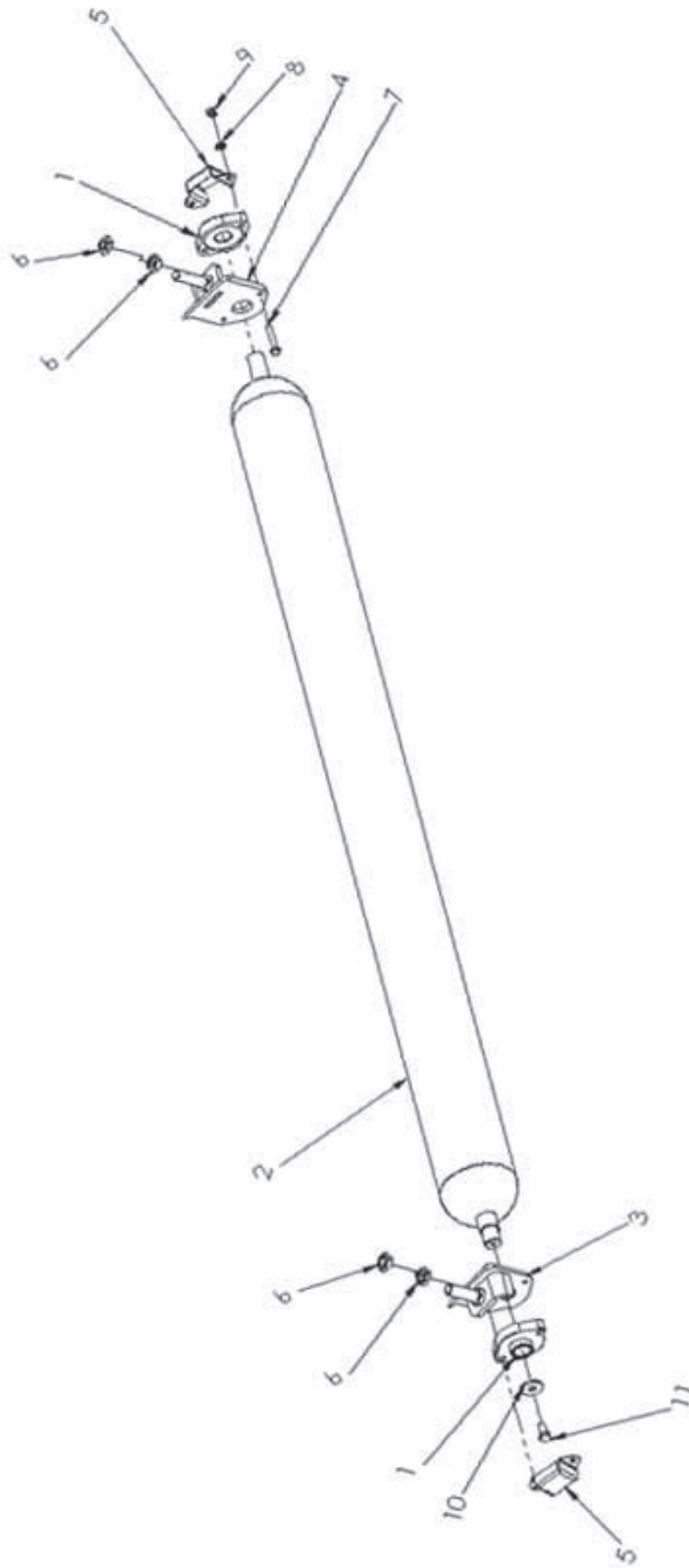




## Diagram 03/02 Rotor MU-FM

POS.	Teil. Nr.	Benennung	MU-FM 100	MU-FM 120	MU-FM 140	MU-FM 160
1	MU1702001	Rotor - 100	1			
1	MU1702002	Rotor - 120		1		
1	MU1702003	Rotor - 140			1	
1	MU1702004	Rotor - 160				1
1	MU1702005	Rotor - 180				
2	MU0702031	Flail Bracket	32	40	48	56
2	MU0702051	Anti Twist Device	16	20	24	28
3	MU0705011	Bearing Counterplate	4	4	4	4
4	MU0707001	Flange Bearing	2	2	2	2
5	MU0801001	Shackle Knife	16	20	24	28
6	MU0801031	Shackle Short	16	20	24	28
9	MU0099907	Hexagon Head Screw	8	8	8	8
10	MU0099997	Flat Washer DIN 125	8	8	8	8
11	MU0099991	Flat Washer DIN 440	1	1	1	1
12	MU0099968	Hexagon Head Screw	1	1	1	1
13	MU0801041	Hexagon Head Screw a.Nut	16	20	24	28
14	MU0099960	Hexagon Nut M10	16	20	24	28
15	MU 1	M - Flail	16	20	24	28
16	MU 3	Spacer Sleeve	32	40	48	56

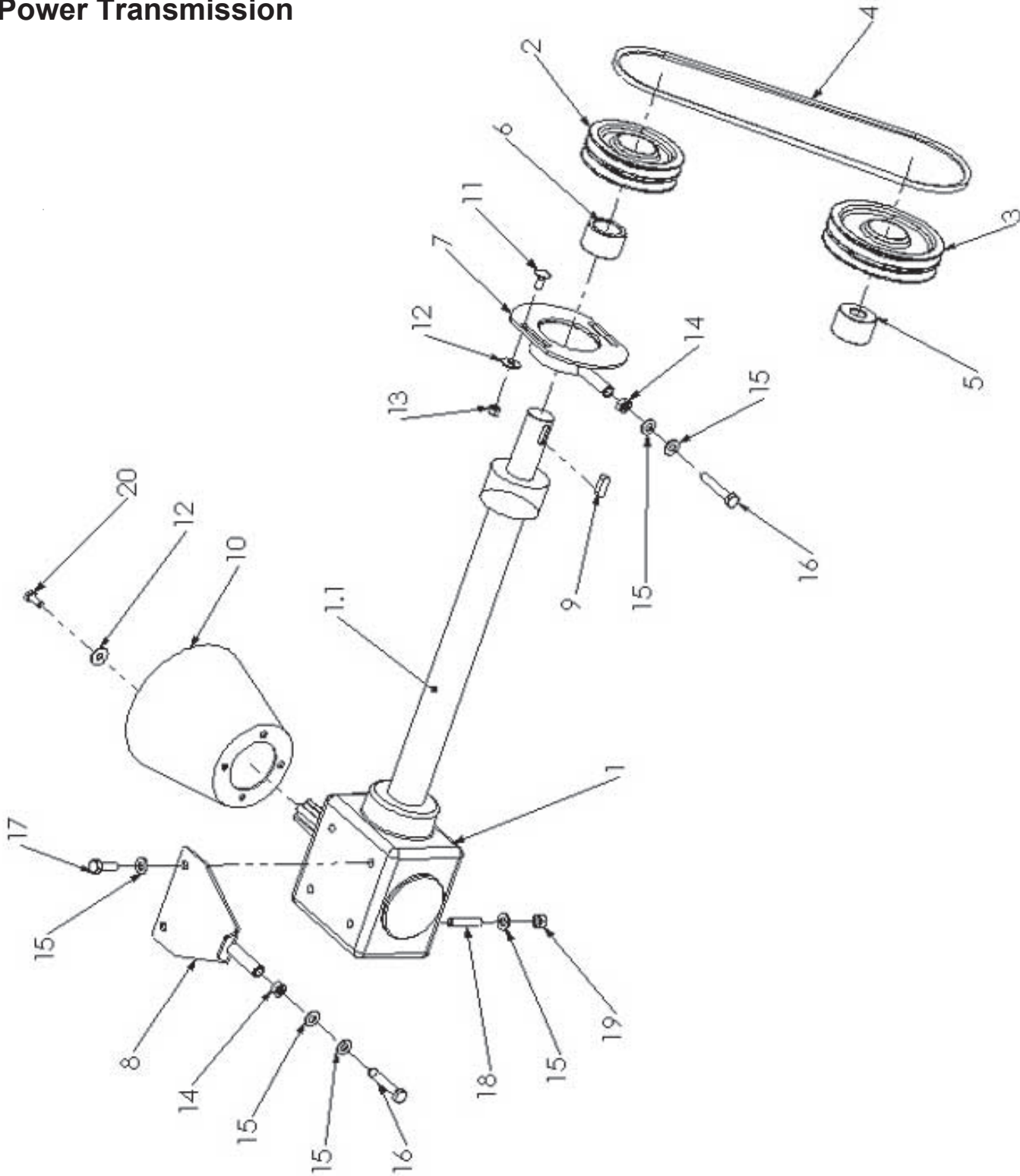
**Diagram 03/02**  
**MU-FM 100-160**  
**Supporting Roll**



## Diagram 04/02 Supporting Roll MU-FM

POS.	Teil. Nr.	Benennung	MU-FM	MU-FM	MU-FM	MU-FM
			100	120	140	160
1	MU0501051	Flange Bearing	2	2	2	2
2	MU0110791	Supporting Roll - 100	1			
2	MU0110792	Supporting Roll - 120		1		
2	MU0110793	Supporting Roll - 140			1	
2	MU0110794	Supporting Roll - 160				1
2	MU0110795	Supporting Roll - 180				
3	MU1227190	Supporting Retainer Right	1	1	1	1
4	MU1227200	Supporting Retainer Left	1	1	1	1
5	MU0227210	Bearing Guard	2	2	2	2
6	MU0099911	Hexagon Nut DIN 936 M16	4	4	4	4
7	MU0099909	Hexagon Head Screw	4	4	4	4
8	MU0099999	Flat Washer DIN 125	4	4	4	4
9	MU0099961	Hexagon Nut DIN 985	4	4	4	4
10	MU0099992	Flat Washer DIN 440	1	1	1	1
11	MU0099970	Hexagon Head Screw	1	1	1	1

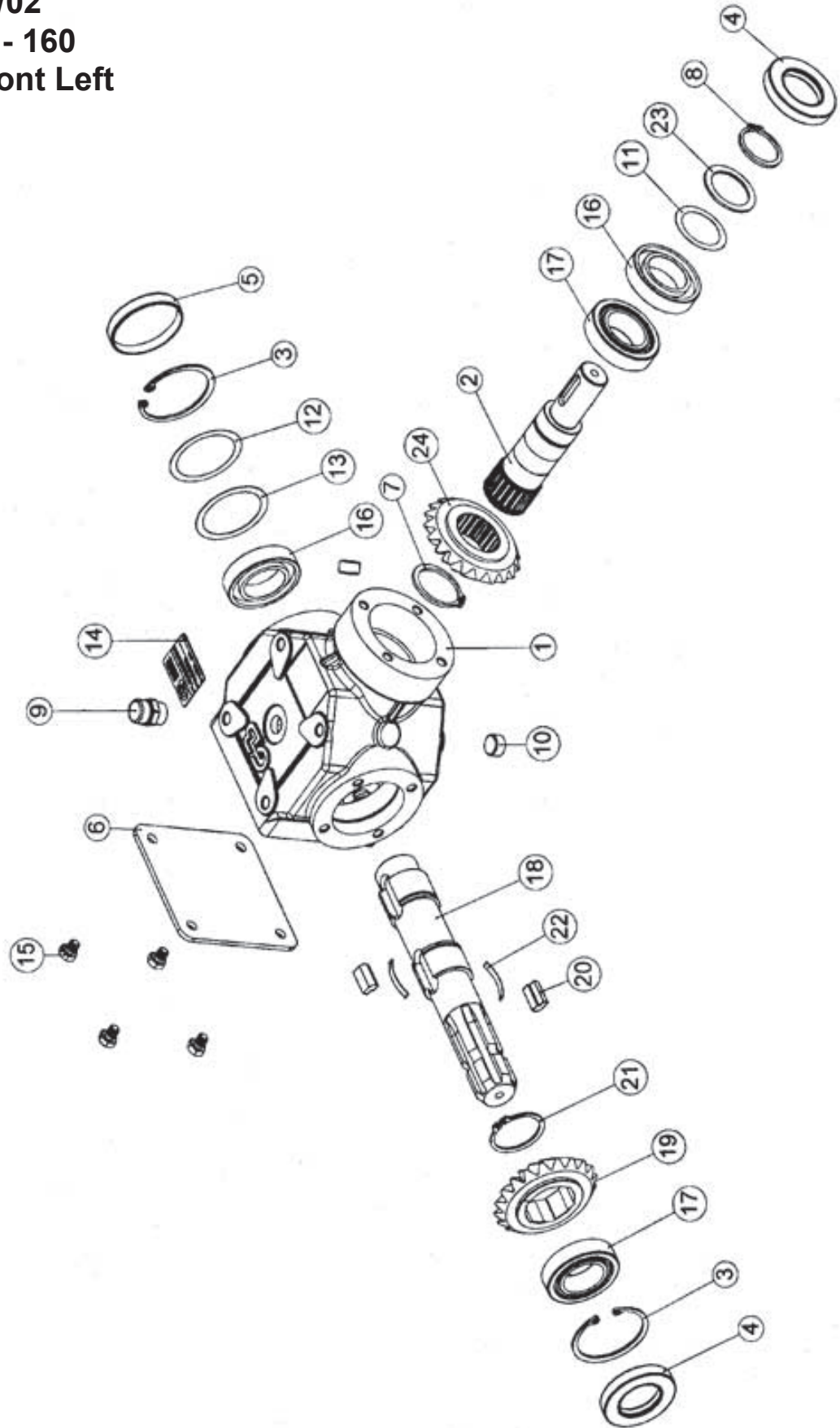
**Diagram 05/02**  
**MU-FM 100-160**  
**Power Transmission**



## Diagram 05/02 Power Transmission MU-FM

POS.	Teil. Nr.	Benennung	MU-FM 100	MU-FM 120	MU-FM 140	MU-FM 160
1	MUR200002	Gearbox left hand	1	1	1	1
1	MUR200004	Gearbox right hand	1	1	1	1
2	MU0222061	Belt Pulley D=125	1	1	1	1
3	MU0222051	Belt Pulley D=150	1	1	1	1
4	MU2221510	V-Belt 2x17x1016 until year 2004 2x17x1060 from year 2005	2	2	2	2
5	MU0222071	Taper-Lock Bush	1	1	1	1
6	MU0222071	Taper-Lock Bush	1	1	1	1
7	MU0210001	Chuck	1	1	1	1
8	MU0214001	Gearbox Adjustment	1	1	1	1
9	MU0099953	Feather Key	1	1	1	1
10	MU0220020	Guard	1	1	1	1
11	MU0099989	Coach Bolt DIN 603	2	2	2	2
12	MU0099951	Flat Washer DIN 9021	2	2	2	2
13	MU0099961	Hexagon Nut M8	2	2	2	2
14	MU0099914	Hexagon Nut DIN 934	2	2	2	2
15	MU0099998	Flat Washer DIN 125	10	10	10	10
16	MU0099913	Hexagon Head Srew	2	2	2	2
17	MU0099971	Hexagon Head Srew	2	2	2	2
18	MU0099981	Hexagon Socket Head Screw	4	4	4	4
19	MU0099960	Hexagon Nut DIN 985	4	4	4	4
20	MU0099972	Hexagon Head Srew DIN 933	4	4	4	4
21	MU0220014	Axle Extension 480 mm	1			
21	MU0220013	Axle Extension 580 mm		1		
21	MU0220012	Axle Extension 700 mm			1	
21	MU0220011	Axle Extension 780 mm				1
21	MU0220015	Axle Extension				

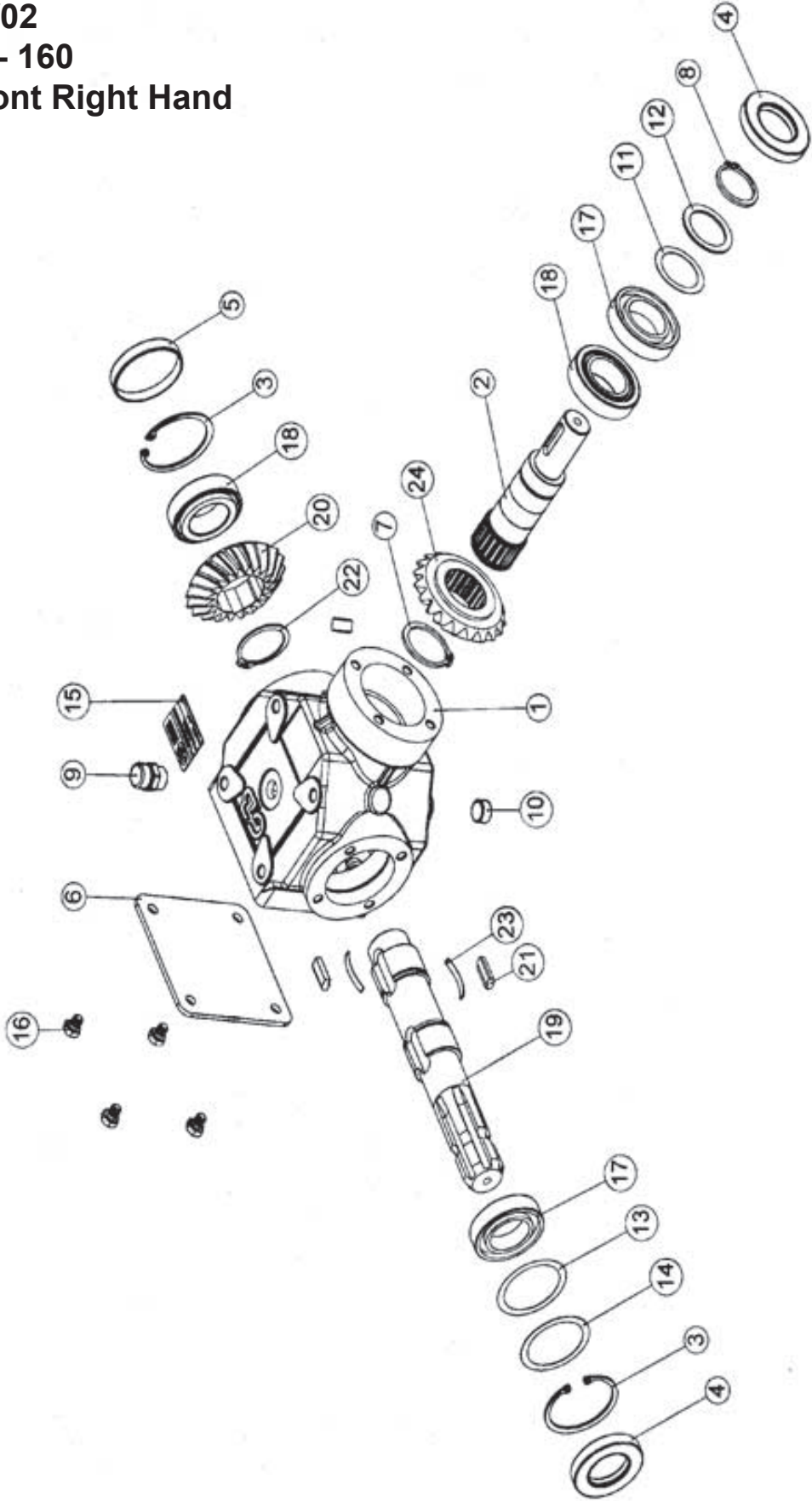
**Diagram 06/02**  
**MU-FM 100 - 160**  
**Gearbox Front Left**



## Diagram 06/02 Gearbox MU-FM Front Left Hand

POS.	Teil-Nr.	Benennung	MU-FM	MU-FM	MU-FM	MU-FM
			100	120	140	160
1		see Diagram 05/01 Pos. 1	1	1	1	1
2	MUR20202	Power Take Off Shaft	1	1	1	1
3	MU7T1025	Circlip	2	2	2	2
4	MUR20204	Shaft Sealing Ring	2	2	2	2
5	MUR20205	Sealing Cap	1	1	1	1
6	MUR20206	Housing Sealing Cap	1	1	1	1
7	MU980870	Circlip	1	1	1	1
8	MU490009	Circlip	1	1	1	1
9	MU623018	Gearbox Bleeder Screw	1	1	1	1
10	MUR20210	Oil Outlet Screw	2	2	2	2
11	MUR20211	Spacer 35x47x0,5	1	1	1	1
12	MUR20212	Spacer 50x62x0,3	1	1	1	1
13	MUR20213	Spacer 50x62x0,5	1	1	1	1
14		Type Label	1	1	1	1
15	MUR20215	Hexagon Head Screw M8x10	4	4	4	4
16	MUR20216	Bearing	2	2	2	2
17	MUR20217	Bearing	2	2	2	2
18	MUR20218	Power Take Input Shaft	1	1	1	1
19	MUR20219	Crown Gear Z20 M4,2 Free Wheel	1	1	1	1
20	MUR20220	Ratchet	2	2	2	2
21	MU623013	Circlip	1	1	1	1
22	MU490025	Spring for Free Wheel	2	2	2	2
23	MUR20223	Spacer 35x47x2	1	1	1	1
24	MUR20224	Crown Gear Z20 M4,2	1	1	1	1

**Diagram 07/02**  
**MU-FM 100 - 160**  
**Gearbox Front Right Hand**





## Diagram 07/02 Gearbox MU-FM Front Right Hand

POS.	Teil-Nr.	Benennung	MU-FM	MU-FM	MU-FM	MU-FM
			100	120	140	160
1		see Diagram 05/01 Pos. 1	1	1	1	1
2	MUR20202	Power Take Off Shaft	1	1	1	1
3	MU7T1025	Circlip	2	2	2	2
4	MUR20204	Shaft Sealing Ring	2	2	2	2
5	MUR20205	Sealing Cap	1	1	1	1
6	MUR20206	Housing Sealing Cap	1	1	1	1
7	MU980870	Circlip	1	1	1	1
8	MU490009	Circlip	1	1	1	1
9	MU623018	Gearbox Bleeder Screw	1	1	1	1
10	MUR20210	Oil Outlet Screw	2	2	2	2
11	MUR20211	Spacer 35x47x0,5	1	1	1	1
12	MUR20223	Spacer 35x47x2	1	1	1	1
13	MUR20212	Spacer 50x62x0,3	1	1	1	1
14	MUR20213	Spacer 50x62x0,5	1	1	1	1
15		Type Label	1	1	1	1
16	MUR20215	Hexagon Head Screw M8x10	4	4	4	4
17	MUR20216	Bearing	2	2	2	2
18	MUR20217	Bearing	2	2	2	2
19	MUR20218	Power Take Input Shaft	1	1	1	1
20	MUR20219	Crown Gear Z20 M4,2 Free Wheel	1	1	1	1
21	MUR20220	Ratchet	2	2	2	2
22	MU623013	Circlip	1	1	1	1
23	MU490025	Spring for Free Wheel	2	2	2	2
24	MUR20224	Crown Gear Z20 M4,2	1	1	1	1





Bei weiteren Fragen zu Technik und Einsatz Ihres Gerätes stehen Ihnen unsere Mitarbeiter oder unsere Vertriebspartner (siehe [www.muething.com](http://www.muething.com)) gerne zur Verfügung.

Our employees or sales partners (see [www.muething.com](http://www.muething.com)) are happy to help should you have any further questions on the technical aspects and use of your implement.

Nos collaborateurs ou nos partenaires commerciaux (voir [www.muething.com](http://www.muething.com)) sont à votre entière disposition pour toutes questions complémentaires relatives aux caractéristiques techniques ou à l'utilisation de votre engin.

Tanto nuestros empleados como los socios comerciales de la marca (ver [www.muething.com](http://www.muething.com)) estamos a su disposición para atender cualquier consulta técnica o sobre piezas que pueda tener respecto a su equipo.



**Müthing GmbH & Co. KG Soest**

Am Silberg 23  
59494 Soest

Tel +49 (0) 2921 96510

Fax +49 (0) 2921 73080

[soest@muething.com](mailto:soest@muething.com)

**Müthing GmbH & Co. KG Uffenheim**

Am Brunnlein 2  
97215 Uffenheim

Tel +49 (0) 9842 98660

Fax +49 (0) 9842 98667

[uffenheim@muething.com](mailto:uffenheim@muething.com)

**WWW.MUETHING.COM**